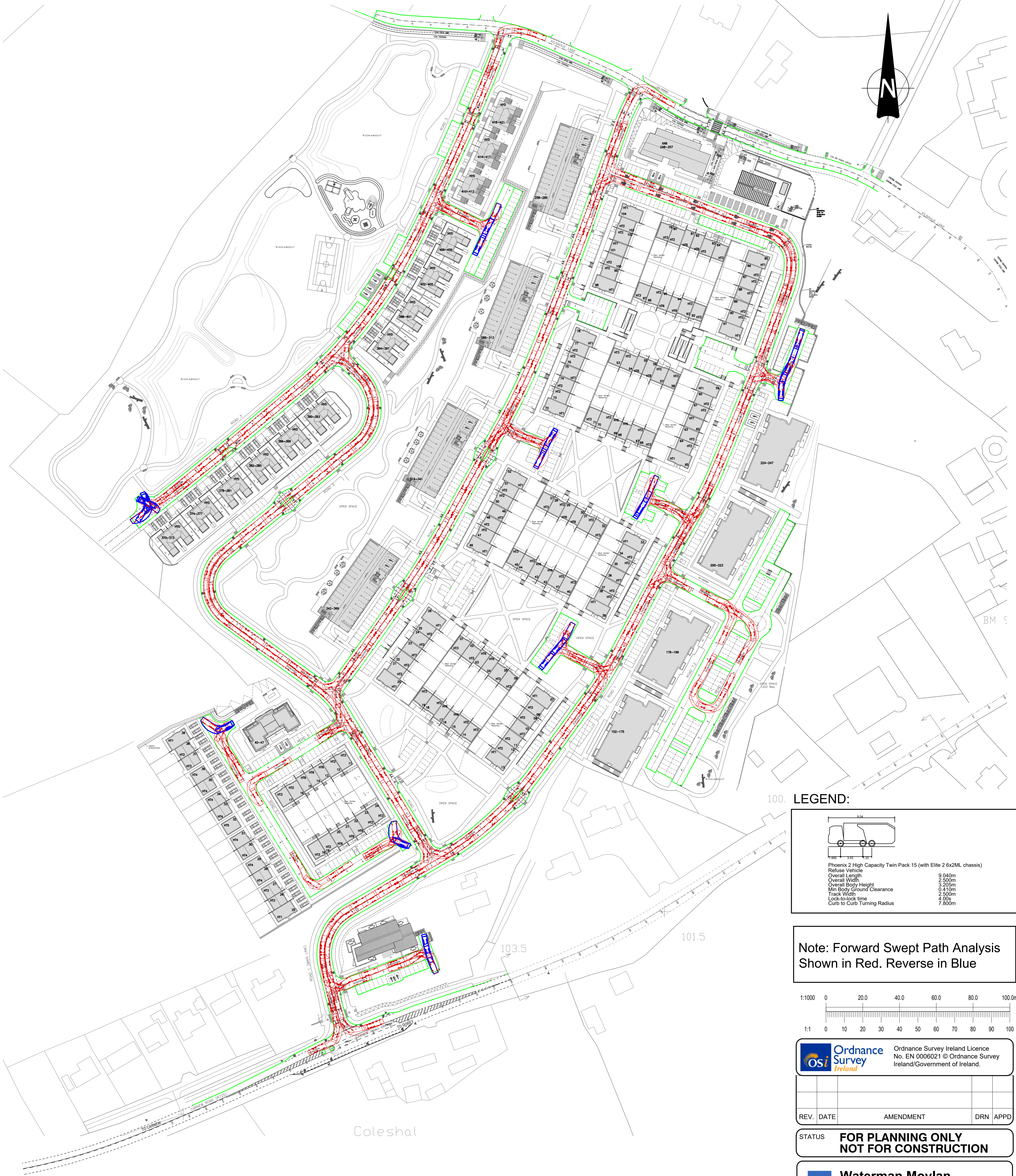
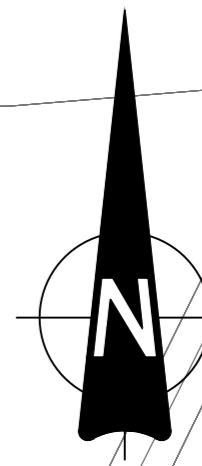
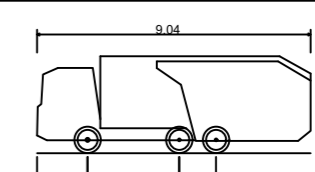


- NOTES:
- DO NOT SCALE. USE FIGURED DIMENSIONS ONLY.
  - THIS DRAWING IS TO BE READ IN CONJUNCTION WITH ALL OTHER RELEVANT ARCHITECTURAL AND ENGINEERING DRAWINGS.

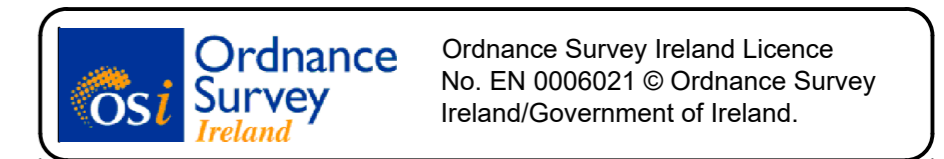
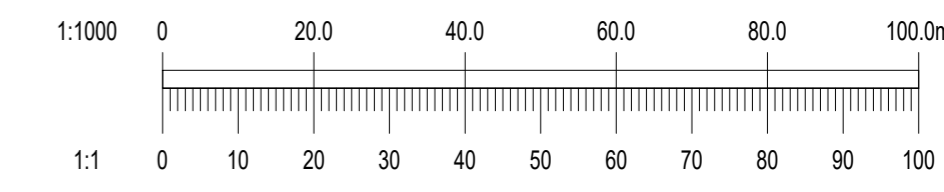


100. LEGEND:



Phoenix 2 High Capacity Twin Pack 15 (with Elite 2 6x2ML chassis)  
 Refuse Vehicle  
 Overall Length 9.040m  
 Overall Width 2.550m  
 Overall Body Height 3.295m  
 Min Body Ground Clearance 0.410m  
 Track Width 2.500m  
 Lock-back time 4.00s  
 Curb to Curb Turning Radius 7.800m

Note: Forward Swept Path Analysis Shown in Red. Reverse in Blue



REV.	DATE	AMENDMENT	DRN	APPD

STATUS **FOR PLANNING ONLY NOT FOR CONSTRUCTION**

**Waterman Moylan**  
 Engineering Consultants  
 BLOCK 5, EASTPOINT BUSINESS PARK, ALFIE BYRNE ROAD, DUBLIN D03 H3F4 IRELAND.  
 Tel: (01) 664 8900 Fax: (01) 661 3618  
 Email: info@waterman-moylan.ie www.waterman-moylan.ie

CLIENT	GERARD GANNON PROPERTIES
ARCHITECT	CONNOLLY ARCHITECTS
PROJECT	LANDS AT KILNAHUE & GOREY HILL, GOREY
TITLE	REFUSE VEHICLE TURNING MOVEMENTS

DRAWN	DESIGNED	APPROVED	DATE
PJD	DA	MD	MARCH 2022
SCALE	JOB NO.	DRG. NO.	REVISION
1:1000 @ A1	13-119	P4150	